

free product samples here

highQu
professionally simple

How to do Direct PCR with ease?

Direct Hot Start PCR / Multiplex PCR / Genotyping

Time-saving Kit for Genotyping and Crude Sample PCR: SampleIN™ Direct PCR Kit

- Ready-to load PCR in 50 minutes without template purification.
- Single-tube 15 min DNA extraction combined with fast hot-start PCR.
- Red dye in the PCR master mix for direct gel loading.
- High yields under standard or fast cycling conditions.
- **Sample Guidelines:**

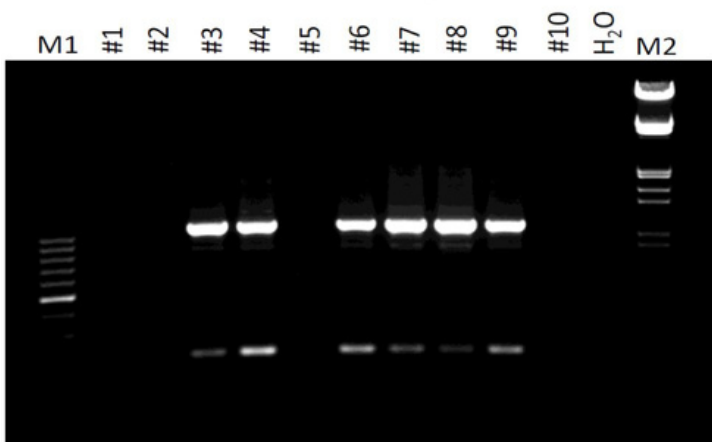
Sample (fresh or frozen)	Amount	Extraction vol.
Mouse tail	2 mm or 3-5 mg	100 µl
Mouse ear	2 mm ² or 3-5 mg	100 µl
Mammalian tissue	5 mg	100 µl
FFPE Tissue	2 mm ² of 10 µm section	100 µl
Blood (fresh/EDTA)	2 µl	100 µl
Blood Guthrie cards	2 mm ²	100 µl
Blood FTA/FTA Elute cards	2 mm ²	100 µl
Hair follicle	2 follicles	100 µl
Buccal swab	1 swab	300 µl
Plant leave	2 mm ² well crashed	100 µl
Plant seed	1 very small seed crashed or cut and crashed seed piece of 2 mm ²	100 µl

Sample amounts can be slightly increased for better yields, but too much material may cause inefficient lysis and PCR inhibition.

Customer Experience: Genotyping with SampleIN™ Direct PCR Kit

highQu Customer Experience: Dr. Uwe Pfeil, Institut für Anatomie und Zellbiologie, Giessen

CHAT-Cre-CHR2-Tomato Mouse Genotyping (ear paunch direct PCR) using SampleIN™ Direct PCR Kit according to supplier's protocol



Mouse ear paunches have been prepared for genotyping like described in Product Insert. PCR using 1 µl of lysate has been performed in 25 µl reactions under conditions suggested in Product Insert. Expected PCR product sizes: 1071 bp and 198 bp.

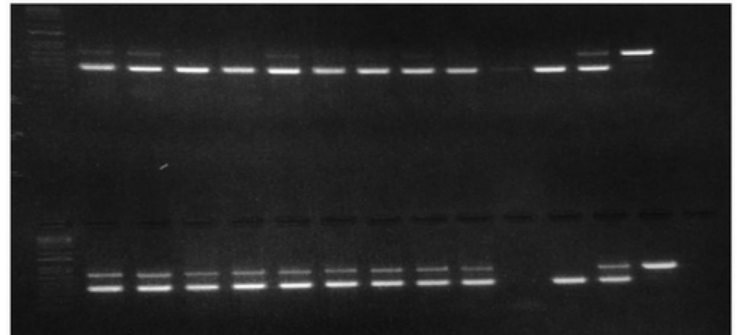
Robust Mix for Direct, Colony PCR: ALLin™ HS Red Taq Mastermix

- Fast, high yield PCR from crude samples.
- Up to 6 kb long PCR even from GC-rich and complex templates.
- Increased sensitivity for low-copy number targets.
- Premixed with gel-loading dye for direct electrophoresis.

highQu Customer Experience:

Dr. rer. nat. Tobias Otto, Technische Assistentin Sonja Strauch, Uniklinik RWTH Aachen, Klinik für Gastroenterologie, Stoffwechselerkrankungen und Internistische Intensivmedizin, Forschung, AG Trautwein

BL6-Mdr2-Pnpla3 Mouse Genotyping using ALLin™ HS Red Taq Mastermix, 2X and competitor's master mix



Crude mouse ear paunch extracts PCR. Examined gene: Mdr2; expected PCR product: 780 bp & 400 bp. The lower gel shows genotyping results obtained with highQu mix, the upper one with competitor's mix. ALLin™ HS Red Taq Mastermix provides more consistent, reliable and sensitive amplification.

What highQu customers say?

Wir haben den SampleIN™ Direct PCR Kit bestellt um wieder zuverlässige Ergebnisse in unseren Genotypisierungs-PCRs zu erhalten. Nach der Umstellung von Mäuse Schwanzbiopsien auf Ohrbiopsien hatten wir das Problem, dass die PCRs bei sehr kleinen Gewebestücken nach Lyse mit selbst hergestelltem PBND + Proteinase K nicht zuverlässig funktioniert haben.

Seit wir den SampleIN™ Direct PCR Kit nutzen, haben wir dieses Problem nicht mehr. Die Lyse ist sehr schnell (15 Minuten!) und der PCR-Master Mix funktioniert überzeugend gut – kein Raten mehr ob da jetzt eine Bande ist oder nicht. Den Kit können wir bedenkenlos empfehlen.

Uniklinikum Erlangen

call to get the best offer:
+49 7250 33 13 40

free product samples here

highQu
professionally simple

ENZYMES MADE TO AMPLIFY

Enjoy easy-to-use, outperforming tools and consistently great results!

Why to choose highQu?

- Best value for money
- Scientific track record since 2013
- Trusted by scientists in >30 countries
- Next day delivery in Germany
- Immediate customer support

What's special about highQu PCR/qPCR reagents?

- Robust - inhibitor-resistant, minimum optimization
- Easy-to-use - simplified protocols
- Fast - designed for rapid workflows
- Outperforming – great on complex templates
- ALLin™ formulation - dNTPs in buffers, water supplied

Optical Genome Mapping as a Diagnostic Tool in Pediatric Acute Myeloid Leukemia *Cancers, 2022*
Validation of Newly Detected SVs by Long-Distance Touchdown PCR and Sequencing: ...Primer walking was used to amplify the breakpoint. The identified breakpoints were re-confirmed by a breakpoint-spanning PCR using the ALLin™ HS Red Taq Master Mix (highQu GmbH, Kraichtal, Germany)...

The microRNA processing subunit DGCR8 is required for a T cell-dependent germinal center response... - *Frontiers in ..., 2022*

... To analyze the DGCR8-alleles by PCR, genomic DNA was isolated from 5x10⁴ cells of the respective cell populations using the SampleIn™ Direct PCR Kit (highQu, Cat# DPK0101) ...



What would you like to try?

qPCR Mixes for Probes

QPP010S ORA™ qPCR Probe Mix
QPP040S ORA™ SEE qPCR Probe Mix
QPP020S ORA™ qPCR Probe ROX L Mix
QPP050S ORA™ SEE qPCR Probe ROX L Mix
QPP030S ORA™ qPCR Probe ROX H Mix
QPP060S ORA™ SEE qPCR Probe ROX H Mix

qPCR Mixes with Dye

QPD010S ORA™ qPCR Green ROX L Mix
QPD050S ORA™ SEE qPCR Green ROX L Mix
QPD020S ORA™ qPCR Green ROX H Mix
QPD040S ORA™ SEE qPCR Green ROX H Mix
QPD030S ORA™ qPCR HRM Mix

One Step RT qPCR Kits for Probes

QOP040S 4X 1Step RT qPCR Probe Kit
QOP050S 4X 1Step RT qPCR Probe ROX L Kit
QOP060S 4X 1Step RT qPCR Probe ROX H Kit
QOP110S 2X 1Step RT qPCR Probe Kit
QOP120S 2X 1Step RT qPCR Probe ROX L Kit
QOP130S 2X 1Step RT qPCR Probe ROX H Kit

One Step RT qPCR Kits with Dye

QOD010S 1Step RT qPCR Green ROX L Kit
QOD020S 1Step RT qPCR Green ROX H Kit

Isothermal Amplification

IDK0101 ALLin™ Isothermal DNA Amplification Kit
IRK0101 ALLin™ Isothermal 1Step RNA Amplification Kit
IDE010S phi29 DNA Polymerase
IDE020E ALLin™ Bst DNA Polymerase
IDE030E ALLin™ Hot Start Bst Polymerase
IDK0201 ALLin™ HS Isothermal DNA Amplification Kit
IDK0301 ALLin™ HS Iso-Colorimetric DNA Amplification Kit

Standard PCR

PCE010S ALLin™ Taq DNA Polymerase
PCM020S ALLin™ Red Taq Mastermix
PCM010S ALLin™ Taq Mastermix
PCE020S Taq DNA Polymerase

Hot Start PCR and Direct PCR

HSE010S ALLin™ Hot Start Taq Polymerase
HSM030S ALLin™ HS Red Taq Mastermix
HSM020S ALLin™ Hot Start Taq Mastermix

High Fidelity and Long PCR

HLE010S ALLin™ RPH Polymerase
HLM010S ALLin™ RPH Mastermix
HLE020S ALLin™ HiFi DNA Polymerase
HLE030S ALLin™ Mega HiFi DNA Polymerase
HLM020S ALLin™ Mega HiFi Mastermix
HLM030S ALLin™ Mega HiFi Red Mastermix
HLE040S ALLin™ Mega HS HiFi DNA Polymerase
HLM040S ALLin™ Mega HS HiFi Mastermix
HLM050S ALLin™ Mega HS HiFi Red Mastermix

Direct PCR

DPK010S SampleIn™ Direct PCR Kit

PCR related Reagents & Kits

PRK0101 Proteinase K MBG Solution
SCR0101 Synthetic Carrier RNA
PDK0101 PCRbeam™ Fast PCR Detection Kit

NUM010S 25 mM dNTP Mix

Reverse Transcription & RT-PCR

RTK020S 1Step RT PCR Kit
RTK010S qScriber™ cDNA Synthesis Kit
RTM030S HighScriber™ Reverse Transcriptase Mix
RNI030S SecurIN™ Advanced RNase Inhibitor

Ladders for DNA Electrophoresis

DNL010S Take5™ 1kb DNA Ladder
DNL030S Take5™ 50 bp DNA Ladder
DNL020S Take5™ 100 bp DNA Ladder
DNL040S Take5™ HR DNA Ladder

Novel NA Stains for DNA Electrophoresis

NAS030S StainIN™ eco-RED Nucleic Acid Stain
NAS020S StainIN™ GREEN Nucleic Acid Stain

Ladders for Protein Electrophoresis

PRL010S Cozy™ Prestained Protein Ladder
PRL020S CozyHi™ Prestained Protein Ladder
PRL030S CozyXL™ Prestained Protein Ladder

info@highqu.com

+49 7250 33 13 401

www.highQu.com