

Nucleic Acid and Protein Electrophoresis

Protein Ladders, DNA Ladders, Less-toxic Nucleic Acid Stains

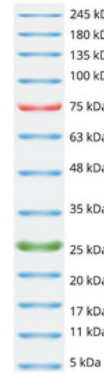
Ready-to-use Prestained Protein Ladders

- Ambient-temperature stable
- Available in 3 different ranges
- High MW 310 kDa band in CozyXL™ Ladder
- Sharp bands and bright colors on gels
- Great performance in Western blots

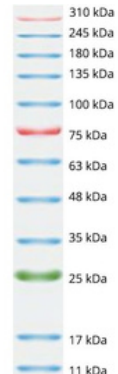
Cozy™
11 - 180 kDa Range
25 & 75 kDa References
10 Bands; 0.2-0.4 µg/µl each



CozyHi™
5 - 245 kDa Range
25 & 75 kDa References
13 Bands; 0.2-0.4 µg/µl each

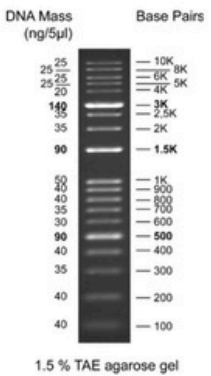


CozyXL™
11 - 310 kDa Range
25 & 75 kDa References
12 Bands; 0.2-0.4 µg/µl each

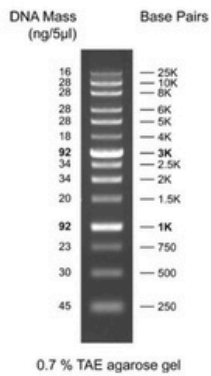


Take5™ DNA Ladders

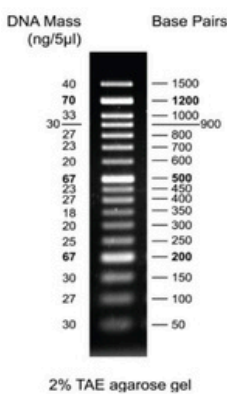
- Ambient-temperature stable ladders - always ready to use.
- Sharp bands, bright reference bands, indicated DNA mass.
- Supplied with loading dye for DNA samples.



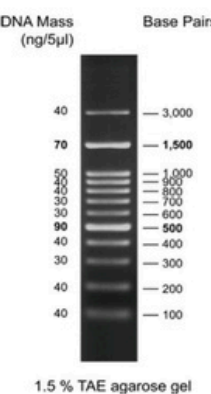
Take5™ 1kb DNA Ladder
100 bp- 10 kb Range
0.5; 1.5 & 3 kb Reference
19 Bands
172 ng/µl Concentration
Ready-to-use:
Load: 5 µl/well
Tracking Dyes:
Xylene cyanol FF (~4 kb)
Bromophenol blue (~0.4 kb)
Orange G (<50 bp)



Take5™ HR DNA Ladder
250 bp- 25 kb Range
1 & 3 kb Reference
14 Bands
104 ng/µl Concentration
Ready-to-use:
Load: 5 µl/well
Tracking Dyes:
Xylene cyanol FF (~4 kb)
Bromophenol blue (~0.4 kb)



Take5™ 50 bp DNA Ladder
50 bp- 1.5 kb Range
0.2 & 0.5 kb Reference
17 Bands
112 ng/µl Concentration
Ready-to-use:
Load: 5 µl/well
Tracking Dyes:
Orange G (<50 bp)



Take5™ 100 bp DNA Ladder
100 bp- 3 kb Range
0.5 & 1.5 kb Reference
12 Bands
108 ng/µl Concentration
Ready-to-use:
Load: 5 µl/well
Tracking Dyes:
Xylene cyanol FF (~4 kb)
Orange G (<50 bp)

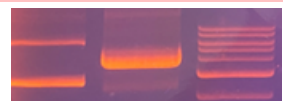
StainIN™ GREEN NA Stain

- Much more safe alternative to ethidium bromide, more economical alternative to competing green dyes.
- Unique – has two emission peaks, stains DNA in green, and RNA in red.
- Highly sensitive NA detection - up to 4x more sensitive than EtBr.
- Time saving – in gel stain, no post-run staining, no destaining.



StainIN™ eco-RED NA Stain

- Safe, economical alternative to ethidium bromide.
- Universal – in gel staining, or post-run staining, no de-staining.
- Ambient temperature storage and shipment.



[samples at highqu.com/Samples](https://www.highqu.com/Samples)

highQu
professionally simple

ENZYMES MADE TO AMPLIFY

Enjoy easy-to-use, outperforming tools and consistently great results!

Why to choose highQu?

- Best value for money
- **Scientific track record since 2013**
- Trusted by scientists in >40 countries
- Next day delivery in Germany
- Immediate customer support

What's special about highQu PCR/qPCR reagents?

- Robust - inhibitor-resistant, minimum optimization
- Easy-to-use - simplified protocols
- Fast - designed for rapid workflows
- Outperforming – great on complex templates
- ALLin™ formulation - dNTPs in buffers, water supplied

Optical Genome Mapping as a Diagnostic Tool in Pediatric Acute Myeloid Leukemia *Cancers, 2022*
Validation of Newly Detected SVs by Long-Distance Touchdown PCR and Sequencing: ...Primer walking was used to amplify the breakpoint. The identified breakpoints were re-confirmed by a breakpoint-spanning PCR using the **ALLin™ HS Red Taq Master Mix** (highQu GmbH, Kraichtal, Germany)...

Development of the first PVM TaqMan® primer set and a one-step real-time multiplex DiRT-PCR for the detection of PLRV, PVY, PVM, PVS, PVA and PVX in potato tuber sap *The European Journal of Plant Pathology, 2022*

We extended the reverse transcription in (MV) to 1 h and changed the reverse transcriptase from SuperScript®III (Thermo Fisher Scientific) to **HighScriber™ Reverse Transcriptase** (HighQu...).

Diversity of Streptomyces spp. from mangrove forest of Sarawak (Malaysia) and screening of their antioxidant and cytotoxic activities *Nature Scientific Reports, 2019*

Genomic DNA extraction was performed...PCR amplification of 16S rRNA gene was carried out in a final volume of 20 µL using TurboCycler 2... based on protocol adapted from Lee et al. 65, with **highQu Taq DNA polymerase** (Kraichtal, Germany)



What would you like to try?

qPCR Mixes for Probes

QPP010S ORA™ qPCR Probe Mix
QPP040S ORA™ SEE qPCR Probe Mix
QPP020S ORA™ qPCR Probe ROX L Mix
QPP050S ORA™ SEE qPCR Probe ROX L Mix
QPP030S ORA™ qPCR Probe ROX H Mix
QPP060S ORA™ SEE qPCR Probe ROX H Mix

qPCR Mixes with Dye

QPD010S ORA™ qPCR Green ROX L Mix
QPD050S ORA™ SEE qPCR Green ROX L Mix
QPD020S ORA™ qPCR Green ROX H Mix
QPD040S ORA™ SEE qPCR Green ROX H Mix
QPD030S ORA™ qPCR HRM Mix

One Step RT qPCR Kits for Probes

QOP040S 4X 1Step RT qPCR Probe Kit
QOP050S 4X 1Step RT qPCR Probe ROX L Kit
QOP060S 4X 1Step RT qPCR Probe ROX H Kit
QOP110S 2X 1Step RT qPCR Probe Kit
QOP120S 2X 1Step RT qPCR Probe ROX L Kit
QOP130S 2X 1Step RT qPCR Probe ROX H Kit

One Step RT qPCR Kits with Dye

QOD010S 1Step RT qPCR Green ROX L Kit
QOD020S 1Step RT qPCR Green ROX H Kit

Isothermal Amplification

IDK0101 ALLin™ Isothermal DNA Amplification Kit
IRK0101 ALLin™ Isothermal 1Step RNA Amplification Kit
IDE0105 phi29 DNA Polymerase
IDE020E ALLin™ Bst DNA Polymerase
IDE030E ALLin™ Hot Start Bst Polymerase
IDK0201 ALLin™ HS Isothermal DNA Amplification Kit

Standard PCR

PCE010S ALLin™ Taq DNA Polymerase
PCM020S ALLin™ Red Taq Mastermix
PCM010S ALLin™ Taq Mastermix
PCE020S Taq DNA Polymerase

Hot Start PCR and Direct PCR

HSE010S ALLin™ Hot Start Taq Polymerase
HSM030S ALLin™ HS Red Taq Mastermix
HSM020S ALLin™ Hot Start Taq Mastermix

High Fidelity and Long PCR

HLE010S ALLin™ RPH Polymerase
HLM010S ALLin™ RPH Mastermix
HLE020S ALLin™ HiFi DNA Polymerase
HLE030S ALLin™ Mega HiFi DNA Polymerase
HLM020S ALLin™ Mega HiFi Mastermix
HLM030S ALLin™ Mega HiFi Red Mastermix
HLE040S ALLin™ Mega HS HiFi DNA Polymerase
HLM040S ALLin™ Mega HS HiFi Mastermix
HLM050S ALLin™ Mega HS HiFi Red Mastermix

Direct PCR

DPK010S SampleIN™ Direct PCR Kit
PCR related Reagents & Kits
PRK0101 Proteinase K MBG Solution
SCR0101 Synthetic Carrier RNA
PDK0101 PCRbeam™ Fast PCR Detection Kit
NUM010S 25 mM dNTP Mix

Reverse Transcription & RT-PCR

RTK020S 1Step RT PCR Kit
RTK010S qScriber™ cDNA Synthesis Kit
RTM030S HighScriber™ Reverse Transcriptase Mix
RNI030S SecurIN™ Advanced RNase Inhibitor
Ladders for DNA Electrophoresis
DNL010S Take5™ 1kb DNA Ladder
DNL030S Take5™ 50 bp DNA Ladder
DNL020S Take5™ 100 bp DNA Ladder
DNL040S Take5™ HR DNA Ladder

Novel NA Stains for DNA Electrophoresis

NAS030S StainIN™ eco-RED Nucleic Acid Stain
NAS020S StainIN™ GREEN Nucleic Acid Stain
Ladders for Protein Electrophoresis
PRL010S Cozy™ Prestained Protein Ladder
PRL020S CozyHi™ Prestained Protein Ladder
PRL030S CozyXL™ Prestained Protein Ladder

[highQu.com](https://www.highqu.com)

[info@highQu.com](mailto:info@highqu.com)

+49 7250 33 13 401