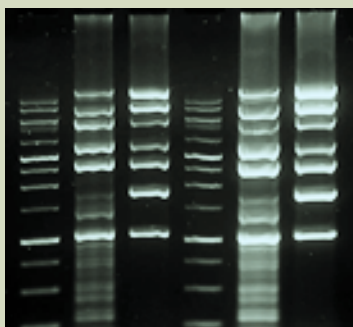


End-Point PCR

High-Fidelity PCR for NGS, Direct Hot Start PCR for Multiplex and Genotyping

Ideal Enzyme for NGS and Cloning: ALLin™ Mega HS HiFi DNA Polymerase/Mixes

- Hot start for increased sensitivity and great multiplex results.
- Fast, high yield PCR with the fidelity >100X higher than Taq.
- Up to 20 kb long PCR even from complex templates.
- Increased processivity for faster amplification and higher yield.
- High thermostability for better denaturation of GC rich templates.
- Mega HiFi Polymerase is available as non-hot start, hot-start, as master mix or red master mix for direct gel loading



High sensitivity multiplex PCR with ALLin™ Mega HS HiFi DNA Polymerase

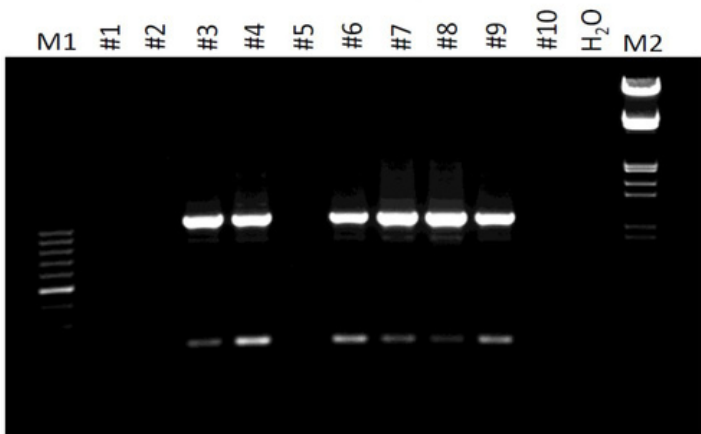
Gel analysis of multiplex PCR reactions - compared to competitor enzyme (2; 5), the ALLin™ Mega HS HiFi DNA Polymerase (3; 6) gives more specific multiplex result.

Time-saving Kit for Genotyping and Crude Sample PCR: SampleIN™ Direct PCR Kit

- Ready-to load PCR in 50 minutes without template purification.
- Single-tube 15 min DNA extraction combined with fast hot-start PCR.
- Red dye in the PCR master mix for direct gel loading.
- High yields under standard or fast cycling conditions.
- Success with GC/AT rich templates.

highQu Customer Experience: Dr. Uwe Pfeil, Institut für Anatomie und Zellbiologie, Giessen

CHAT-Cre-CHR2-Tomato Mouse Genotyping (ear paunch direct PCR) using SampleIN™ Direct PCR Kit according to supplier's protocol



Mouse ear paunches have been prepared for genotyping like described in Product Insert. PCR using 1 µl of lysate has been performed in 25 µl reactions under conditions suggested in Product Insert. Expected PCR product sizes: 1071 bp and 198 bp.

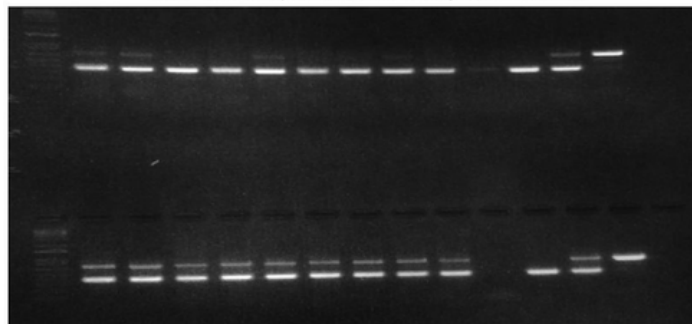
Robust Mix for Direct, Colony PCR: ALLin™ HS Red Taq Mastermix

- Hot start for increased sensitivity and great multiplex results.
- Fast, high yield PCR from crude samples.
- Up to 6 kb long PCR even from GC-rich and complex templates.
- Increased sensitivity for low-copy number targets.
- Premixed with gel-loading dye for direct electrophoresis.

highQu Customer Experience:

Dr. rer. nat. Tobias Otto, Technische Assistentin Sonja Strauch, Uniklinik RWTH Aachen, Klinik für Gastroenterologie, Stoffwechselerkrankungen und Internistische Intensivmedizin, Forschung, AG Trautwein

BL6-Mdr2-Pnpla3 Mouse Genotyping using ALLin™ HS Red Taq Mastermix, 2X and competitor's master mix



Crude mouse ear paunch extracts PCR. Examined gene: Mdr2; expected PCR product: 780 bp & 400 bp. The lower gel shows genotyping results obtained with highQu mix, the upper one with competitor's mix. ALLin™ HS Red Taq Mastermix provides more consistent, reliable and sensitive amplification.

More PCR Enzymes, Mixes, Reagents:

Hot Start PCR:

- HSE010S ALLin™ Hot Start Taq Polymerase
- HSM030S ALLin™ HS Red Taq Mastermix
- HSM020S ALLin™ Hot Start Taq Mastermix

Robust, Long, Complex, Higher -fidelity PCR:

- HLE010S ALLin™ RPH Polymerase (robust, proof-reading, hot-start)
- HLM010S ALLin™ RPH Mastermix
- HLE020S ALLin™ HiFi DNA Polymerase

High-fidelity PCR (>100X higher fidelity than Taq):

- HLE030S ALLin™ Mega HiFi DNA Polymerase
- HLM020S ALLin™ Mega HiFi Mastermix
- HLM030S ALLin™ Mega HiFi Red Mastermix
- HLE040S ALLin™ Mega HS HiFi DNA Polymerase
- HLM040S ALLin™ Mega HS HiFi Mastermix
- HLM050S ALLin™ Mega HS HiFi Red Mastermix

Direct, Crude Sample PCR:

- DPK0101 SampleIN™ Direct PCR Kit

PCR Detection without agarose gels:

- PDK0101 PCRbeam™ Fast PCR Detection Kit

Other reagents:

- NUM010S 25 mM dNTP Mix
- WAT0101 10 ml PCR Water

[samples at highqu.com/Samples](https://www.highqu.com/Samples)

highQu
professionally simple

ENZYMES MADE TO AMPLIFY

Enjoy easy-to-use, outperforming tools and consistently great results!

Why to choose highQu?

- Best value for money
- **Scientific track record since 2013**
- Trusted by scientists in >40 countries
- Next day delivery in Germany
- Immediate customer support

What's special about highQu PCR/qPCR reagents?

- Robust - inhibitor-resistant, minimum optimization
- Easy-to-use - simplified protocols
- Fast - designed for rapid workflows
- Outperforming – great on complex templates
- ALLin™ formulation - dNTPs in buffers, water supplied

Optical Genome Mapping as a Diagnostic Tool in Pediatric Acute Myeloid Leukemia *Cancers, 2022*
Validation of Newly Detected SVs by Long-Distance Touchdown PCR and Sequencing: ...Primer walking was used to amplify the breakpoint. The identified breakpoints were re-confirmed by a breakpoint-spanning PCR using the **ALLin™ HS Red Taq Master Mix** (highQu GmbH, Kraichtal, Germany)...

Development of the first PVM TaqMan® primer set and a one-step real-time multiplex DiRT-PCR for the detection of PLRV, PVY, PVM, PVS, PVA and PVX in potato tuber sap *The European Journal of Plant Pathology, 2022*

We extended the reverse transcription in (MV) to 1 h and changed the reverse transcriptase from SuperScript®III (Thermo Fisher Scientific) to **HighScriber™ Reverse Transcriptase** (HighQu...).

Diversity of Streptomyces spp. from mangrove forest of Sarawak (Malaysia) and screening of their antioxidant and cytotoxic activities *Nature Scientific Reports, 2019*

Genomic DNA extraction was performed...PCR amplification of 16S rRNA gene was carried out in a final volume of 20 µL using TurboCycler 2... based on protocol adapted from Lee et al. 65, with **highQu Taq DNA polymerase** (Kraichtal, Germany)



What would you like to try?

qPCR Mixes for Probes

QPP010S ORA™ qPCR Probe Mix
QPP040S ORA™ SEE qPCR Probe Mix
QPP020S ORA™ qPCR Probe ROX L Mix
QPP050S ORA™ SEE qPCR Probe ROX L Mix
QPP030S ORA™ qPCR Probe ROX H Mix
QPP060S ORA™ SEE qPCR Probe ROX H Mix

qPCR Mixes with Dye

QPD010S ORA™ qPCR Green ROX L Mix
QPD050S ORA™ SEE qPCR Green ROX L Mix
QPD020S ORA™ qPCR Green ROX H Mix
QPD040S ORA™ SEE qPCR Green ROX H Mix
QPD030S ORA™ qPCR HRM Mix

One Step RT qPCR Kits for Probes

QOP040S 4X 1Step RT qPCR Probe Kit
QOP050S 4X 1Step RT qPCR Probe ROX L Kit
QOP060S 4X 1Step RT qPCR Probe ROX H Kit
QOP110S 2X 1Step RT qPCR Probe Kit
QOP120S 2X 1Step RT qPCR Probe ROX L Kit
QOP130S 2X 1Step RT qPCR Probe ROX H Kit

One Step RT qPCR Kits with Dye

QOD010S 1Step RT qPCR Green ROX L Kit
QOD020S 1Step RT qPCR Green ROX H Kit

Isothermal Amplification

IDK0101 ALLin™ Isothermal DNA Amplification Kit
IRK0101 ALLin™ Isothermal 1Step RNA Amplification Kit
IDE0105 phi29 DNA Polymerase
IDE020E ALLin™ Bst DNA Polymerase
IDE030E ALLin™ Hot Start Bst Polymerase
IDK0201 ALLin™ HS Isothermal DNA Amplification Kit

Standard PCR

PCE010S ALLin™ Taq DNA Polymerase
PCM020S ALLin™ Red Taq Mastermix
PCM010S ALLin™ Taq Mastermix
PCE020S Taq DNA Polymerase

Hot Start PCR and Direct PCR

HSE010S ALLin™ Hot Start Taq Polymerase
HSM030S ALLin™ HS Red Taq Mastermix
HSM020S ALLin™ Hot Start Taq Mastermix

High Fidelity and Long PCR

HLE010S ALLin™ RPH Polymerase
HLM010S ALLin™ RPH Mastermix
HLE020S ALLin™ HiFi DNA Polymerase
HLE030S ALLin™ Mega HiFi DNA Polymerase
HLM020S ALLin™ Mega HiFi Mastermix
HLM030S ALLin™ Mega HiFi Red Mastermix
HLE040S ALLin™ Mega HS HiFi DNA Polymerase
HLM040S ALLin™ Mega HS HiFi Mastermix
HLM050S ALLin™ Mega HS HiFi Red Mastermix

Direct PCR

DPK010S SampleIN™ Direct PCR Kit
PCR related Reagents & Kits
PRK0101 Proteinase K MBG Solution
SCR0101 Synthetic Carrier RNA
PDK0101 PCRbeam™ Fast PCR Detection Kit
NUM010S 25 mM dNTP Mix

Reverse Transcription & RT-PCR

RTK020S 1Step RT PCR Kit
RTK010S qScriber™ cDNA Synthesis Kit
RTM030S HighScriber™ Reverse Transcriptase Mix
RNI030S SecurIN™ Advanced RNase Inhibitor
Ladders for DNA Electrophoresis
DNL010S Take5™ 1kb DNA Ladder
DNL030S Take5™ 50 bp DNA Ladder
DNL020S Take5™ 100 bp DNA Ladder
DNL040S Take5™ HR DNA Ladder

Novel NA Stains for DNA Electrophoresis

NAS030S StainIN™ eco-RED Nucleic Acid Stain
NAS020S StainIN™ GREEN Nucleic Acid Stain
Ladders for Protein Electrophoresis
PRL010S Cozy™ Prestained Protein Ladder
PRL020S CozyHi™ Prestained Protein Ladder
PRL030S CozyXL™ Prestained Protein Ladder

[highQu.com](https://www.highqu.com)

[info@highQu.com](mailto:info@highqu.com)

+49 7250 33 13 401